

780 Dubuque Avenue
So. San Francisco, CA 94080, U.S.A.
Tel: (800) 989-6296 / Fax:(650)871-2857
<http://www.maximbio.com>
E-mail: mbi@maximbio.com

MPCR Kit for Rat Inflammatory Cytokine Genes Set-1
Cat No. MP-70105: 50 reactions
Cat No. MP-70104: 100 reactions

**INSTRUCTION
MANUAL**

ID-M10026
Revised April 24, 2003

*These products are designed and sold for use in the Multiplex PCR (MPCR) covered by patent # 5,582,989. Use of the MPCR process requires a license. A limited, non-automated research field license under the patent to use only this amount of the product to practice the MPCR process is conveyed to the purchaser by the purchase of this product.

The Polymerase Chain Reaction (PCR) process is covered by patents owned by Hoffman-LaRoche. Use of the PCR process requires a license. A license for diagnostic purposes may be obtained from Roche Molecular System. A license for research may be obtained by the purchase and the use of authorized reagents and DNA thermocyclers from the Perkin-Elmer Corporation or by negotiating a license with Perkin-Elmer.

This product is intended for research use only and not for diagnostic purposes.

INTRODUCTION

Inflammation is a powerful and protective mechanism by which cells are brought to a site of infection or trauma to clear microorganisms and effect repair. Cytokines play important roles in orchestrating and controlling this process. The cytokines IL-1, IL-6, and TNF are sometimes referred to as the 'inflammatory triad' since they mediate both local and systemic inflammatory responses which are believed to have survival value (1, 2). IL-1 and TNF are rapidly produced by monocytes and macrophages in response to a number of stimuli such as endotoxins, muramyl dipeptides, lectins, immune complexes and other noxious agents. Of these bacteria, endotoxin has frequently been used both *in vivo* and *in vitro* to stimulate the production of IL-1 and TNF and to study their activity. IL-6 is produced by a wide variety of lymphoid and non-lymphoid cells both constitutively and in response to many stimuli including other cytokines. For example, both IL-1 and TNF are potent inducers of IL-6 and once IL-6 is induced cytokines may be distributed to a large number of activity sites via the circulation system. Thus, their activity may be represented in both local and systemic inflammatory events.

Locally, IL-1 and TNF induce neutrophil, lymphocyte, and monocyte adherence to endothelial cells and stimulate endothelial cell procoagulant activity, as well as, plasminogen activator inhibitor synthesis. The effects of IL-1 and TNF on endothelial cells help limit the spread of infections by allowing leucocytes to pass into tissues and accumulate at inflammatory sites. IL-1 and TNF are potent inducers of other cytokines like CSFs, IL-6, IFN- α , and IFN- β , which may mediate their wide range of biological activities. In addition, both cytokines are able to simultaneously induce the expression of many genes and inhibit the expression of others.

IL-1 has a broad spectrum of target cells that share a common involvement in immune or inflammatory responses. These cells include fibroblasts, synovial cells, chondrocytes, endothelial cells, hepatocytes, and osteoclasts. A key feature of IL-1's action on inflammatory cell types is the stimulation of arachidonic acid metabolism (such as prostaglandin production) and the secretion of inflammatory proteins. IL-6 also has a broad spectrum of target cells and thus can influence an equally broad array of immune and inflammatory responses. These target cells include fibroblasts, monocytes/macrophages, endothelial cells, T and B cells, mesangial cells, keratinocytes, hepatocytes and a number of tumor types. As in many other situations, IL-6 and IL-1 exhibit a synergistic effect on the induction of acute-phase protein production by hepatocytes.

Additional cytokines that are implicated in inflammation are IL-8, TGF- β , the chemokines and M-, G-, and GM-CSFs (3,4,5). IL-8 is chemotactic for neutrophils and for T cells, when it is in high concentrations. Also, IL-8 induces neutrophil adherence to endothelial cells. The activation of this adherence is implicated in inflammation in which neutrophils predominate (5). TGF- β is a multi-functional growth factor which promotes the inflammatory process. It is a potent neutrophil chemotactic factor that is capable of recruiting and activating neutrophils at inflammatory sites and enhancing their survival (6). Finally, CSFs are able to activate mature cells and thus are implicated in local activation and recruitment of cells.

While the acute production of these cytokines is beneficial, excessive or sustained production can be deleterious and result in immunopathology. Analysis of the temporal and spatial distribution of RNA expression can provide researchers with important clues about the function of these cytokines within their own systems (7a, 7b). Northern Blot and RNase Protection Assay are the most widely used procedures for determining the abundance of a specific mRNA in a total or poly(A) RNA sample. RT-MPCR provides an alternate and accurate method to detect multiple gene expression by amplifying all the genes under the same conditions (8). Variations in RNA isolation, initial quantitation errors or tube-to-tube variations in RT and PCR can be compensated by including a house-keeping gene, such as GAPDH, in MPCR. Alternatively, a parallel RT-PCR using the same cDNA, PCR conditions and primers for one of house-keeping genes may be run to offset any variations. Differences in gene expression can be determined by normalizing its expression against GAPDH expression.

Maxim's rINF1G-MPCR kits have been designed to detect the expression of Rat GM-CSF, TNF- α , IL-1 β , IL-6, and TGF- β genes. The PCR primers have similar T_m and no obvious 3'-end overlap to enhance multiple amplification. The 532 bp (GAPDH), 453 bp (IL-6), 351 bp (TNF- α), 294 bp (IL-1 β), 250 bp (TGF- β) and 210 bp (GM-CSF) PCR products can be generated from Rat RNA or the positive control, which is included in this kit. Therefore, the rINF1G-MPCR kit provides a quick and simple method to analyze Rat GM-CSF, TNF- α , IL-1 β , IL-6 and TGF- β gene expression, and normalize their expression against GAPDH expression.

PCR PRODUCT QUANTITATION

I: Radioactive Quantitation

In our experience, visual inspection of an EtBr-stained agarose gel is sensitive and precise enough to detect changes as low as two-fold. If greater discrimination is necessary, several methods are available. The simplest procedure is to add a radioactively labeled dNTP to the PCR reaction. After gel analysis, the band may be excised and counted in a scintillation counter. Alternatively the gel may be dried and an autoradiogram may be generated which can be scanned in a densitometer. Another method is to label the 5' end of one or both of the primers with ^{32}P , which is incorporated into the PCR products and then assayed for radioactivity (10).

Southern blot hybridization with synthetic DNA probes may also be performed to verify and quantitate PCR generated products, either by densitometry of an autoradiogram or by excising and counting the signal from a hybridization membrane. This method also quantitates only the target product without interference from nontarget products or primer-generated artifacts.

II: Non-Radioactive Quantitation

Nonradioactive quantitation methods include the use of biotinylated or digoxigenin-labeled primers in conjunction with the appropriate detection methods (11), use of a bioanalyzer or WAVE. For an in-depth discussion of the various methods of PCR product quantitation, refer to the review article by Bloch (12).

In addition to the above methods, several companies now offer gel video systems which can scan and quantitate EtBr-stained gel bands in much the same way a densitometer does. Lab-on-a-chip (BioAnalyzer), CE, HPLC, and WAVE may also be used to analyze MPCR products and quantitate simultaneously.

COMPARISON OF MPCR WITH RPA

MPCR (Multiplex Polymerase Chain Reaction)	RPA (RNase Protection Assay)
√ Non-isotope method with high sensitivity 0.1-1 μg total RNA per MPCR	√ Isotope or Non-Isotope methods 1-20 μg total RNA per RPA assay
√ Whole process takes only a few hours	√ Whole process takes two days
√ Detect Multiple Genes Simultaneously & Quantitatively	√ Detect Multiple Genes Simultaneously & Quantitatively
√ Signal can be quantified directly from gel if isotope is included in MPCR. Additional techniques can be used to quantify MPCR product (using Bioanalyzer, HPLC, and WAVE.)	√ Signal can be quantified directly from gel
√ Non-specific products can be eliminated by using probes and southern hybridization.	√ Non-specific signal can be generated by either low stringent conditions or high-secondary-structure template.
√ Ready-to-use	√ Make own "hot" RNA probes

MPCR KIT DESCRIPTION

MPCR Amplification Kits include all necessary MPCR amplification reagents with the exception of *Taq* Polymerase. These kits have been designed to direct the simultaneous amplification of specific regions of human DNA.

MPCR Kits come in two quantities:

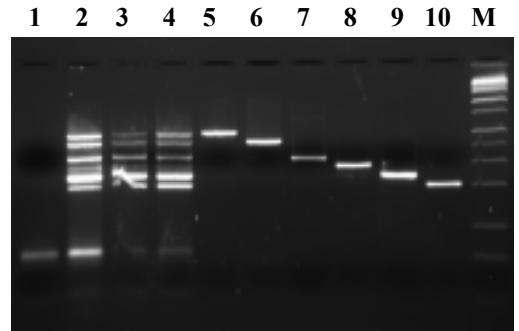
- 50X 50 μ L reaction kits
- 100X 50 μ L reaction kits

Each kit offers Maxim's optimal primer/buffer system which will enhance amplification specificity.

Figure 1 shows quality control MPCR results obtained by following MPCR kit manual using different concentrations of positive control.

For optimal results, please read and follow the instructions in this manual carefully. If you have any questions, please contact Maxim Biotech Customer Service at (650) 871-1919.

Figure 1



- Lane 1: PCR using rINF1G Primers without positive (Negative)
- Lane 2: PCR using rINF1G Primers with 1X Positive
- Lane 3: PCR using rINF1G Primers with Rat Brain cDNA.
- Lane 4: PCR using rINF1G Primers with Rat Spleen cDNA
- Lane 5: PCR using Rat GAPDH Primers
- Lane 6: PCR using Rat IL-6 Primers
- Lane 7: PCR using Rat TNF-alpha Primers
- Lane 8: PCR using Rat IL-1 beta Primers
- Lane 9: PCR using Rat TGF-beta Primers
- Lane 10: PCR using Rat GM-CSF Primers
- Lane M: DNA M.W. Marker

MPCR PRIMER INFORMATION

Product Code	Gene	5'/3' Tm	Amplicon Size	Accession No.	Intron Span	Genomic Size
rINF1G-TNF	Rat TNF- α	70.4°C/69.8°C	351bp	X66539	yes	1179bp
rINF1G-IL1	Rat IL-1 β	66°C/69°C	294bp	M98820	no	294bp
rINF1G-IL6	Rat IL-6	66.4°C/68.2°C	453bp	M26744	yes	3840bp
rINF1G-GMC	Rat GM-CSF	68.5°C/71°C	210bp	U00620	no	210bp
rINF1G-TGF	Rat TGF- β	66.3°C/69°C	250bp	X52498	no	250bp
rINF1G-GAP	Rat GAPDH	64°C/65°C	532bp	M17701	yes	817bp

KIT COMPONENTS

MP-70105

50X50 μ L MPCR reaction kit
Store all reagents at -20°C

Product Code	Kit Component	Amount
rINF1G-B001	2X rINF1G MPCR Buffer (containing chemicals, enhancer, stabilizer and dNTPs)	1250 μ l
rINF1G-C001	10X rINF1G Pos. Control	50 μ l
rINF1G-P001	10X rINF1G MPCR Primers	250 μ l
MRB-0014	DNA M.W. Marker (100 bp ladder)	100 μ l
MRB-0011P	ddH ₂ O (DNase free)	2.0ml
	Instruction Manual	

MP-70104

100X50 μ L MPCR reaction kit
Store all reagents at -20°C

Product Code	Kit Component	Amount
rINF1G-B001	2X rINF1G MPCR Buffer (containing chemicals, enhancer, stabilizer and dNTPs)	1250 μ l X2
rINF1G-C001	10X rINF1G Pos. Control	50 μ l X2
rINF1G-P001	10X rINF1G MPCR Primers	250 μ l X2
MRB-0014	DNA M.W. Marker (100 bp ladder)	100 μ l X2
MRB-0011P	ddH ₂ O (DNase free)	2.0ml X2
	Instruction Manual	

NOTE: SPIN ALL TUBES BEFORE USING AND VORTEX ALL REAGENTS FOR AT LEAST 15 SECONDS BEFORE USING!!

PROCEDURE

RT Protocol:

The isolation of undegraded, intact RNA is an essential prerequisite for successful first strand synthesis and PCR amplification. Care should be taken to avoid RNase contamination of buffers and containers used for RNA work by pretreating with DEPC, autoclaving, and baking. Always wear sterile gloves when handling reagents. Use cDNA derived from 10^5 cells ($1\mu\text{g}$ cDNA) and apply them to each MPCR reaction.

1. Prepare total RNA, mRNA or use the control GAPDH RNA which is provided in Maxim's MPCR kit. **NOTE:** It is best to use cDNA derived from $0.5-1 \times 10^5$ cells ($0.5-1\mu\text{g}$ cDNA derived from RNA) for each MPCR reaction.
2. Equilibrate 3 water baths: 37°C , 70°C and 95°C .
3. **On ice**, pipet $1-2 \mu\text{g}$ mRNA or $10 \mu\text{g}$ total RNA (from 10^6 cells) dissolved in pure water or $2 \mu\text{l}$ control GAPDH RNA into a RNAase free reaction vial. We strongly recommend including a positive control reaction when setting up an RT-PCR reaction for the first time.
4. Add sterile water to a final volume of $14.5 \mu\text{l}$.
5. Add $4 \mu\text{l}$ random hexamer (50 mM) or Oligo(dT) (50 mM).
NOTE: The hexamer and Oligo(dT) RT reactions may be run simultaneously.
6. Incubate tube(s) at 70°C for 5 minutes and quickly chill on ice.
7. Begin your RT reaction by adding the following reagents to your hexamer or Oligo mixture:

Reagent	Description	Volume per Reaction
RNase Inhibitor	$130\text{U}/\mu\text{l}$	$0.5\mu\text{l}$
5 X RT buffer	250mM Tris-HCl ($\text{pH}8.3$) 375mM KCl, 15mM MgCl_2 , 50mM DTT	$10\mu\text{l}$
dNTPs	1mM each	$20\mu\text{l}$
MMLV RT	$250\text{U}/\mu\text{l}$	$1\mu\text{l}$

8. Incubate the RT mixture at 37°C for 60 minutes.
9. Then, heat RT mixture at 95°C for 10 minutes and quickly chill on ice. This will help to eliminate the RT enzyme interference of MPCR reaction later.
10. Add another **$50 \mu\text{l}$** water or 0.1X TE buffer.
11. **$2-5 \mu\text{l}$** of above cDNA is sufficient for most genes in a standard MPCR reaction. However, more or less DNA may be needed in PCR depending on the copy number of the specific gene.

NOTE: Please do not use excess amount of cDNA. The salt from RT reaction may interfere the performance of MPCR.

PCR Protocol:

1. *Taq* DNA polymerase from Perkin-Elmer or its derivatives are highly recommended for MPCR. Ampli-*Taq* Gold, however, is not recommended because its own optimal buffer system is required.
2. **Reaction Mixture Preparation:**
 - A. Set up MPCR reactions with the test samples and MPCR buffers provided in the MPCR kit according to the table on the next page:

PROCEDURE

Volume (Per assay)	Reagent (Add in order)
25.0 µl	2X MPCR BufferMixture
5.0µl	10X MPCR Primers
0.5µl	<i>Taq</i> DNA Polymerase(5U/µl)
5.0µl	Specimen cDNA or 10X Control cDNA from kit
14.5µl	H ₂ O
50.0µl	Mineral Oil (optional)

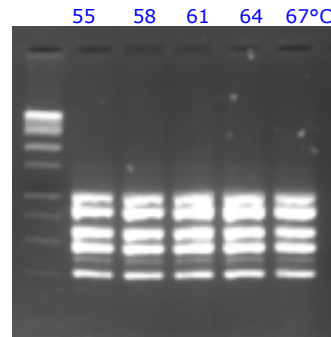
*: ³²P dNTPs may be used here to achieve higher sensitivity and better quantitation. 5-10 µCi [³²P]dCTP (3000 Ci/mmmole) should be used here per MPCR. Keep final dNTPs concentration same as without ³²P-dNTPs.

B. EDTA concentration in test sample must not exceed 0.5 mM because Mg⁺⁺ concentration in MPCR Buffers is limited to certain ranges. Additional Mg⁺⁺ may be added to the PCR mixture to compensate for EDTA. We strongly recommend running an MPCR reaction with the positive control provided in the kit. Since the MPCR DNA polymerase needed in each reaction is in a very small volume, it is recommended that all of the PCR components be premixed in a sufficient quantity for daily needs and then dispensed into individual reaction vials. This will help you to achieve more accurate measurements.

3. PCR thermocycle profile:

Reaction profiles will need to be optimized according to the machine type and needs of user. Please take note that temperature variations occur between different thermocyclers, therefore, the annealing temperature in the sample profile below is given as a range. It will be necessary to determine the optimal temperature for your individual thermocycler. An example of a time-temperature profile for the positive control PCR reaction optimized for Perkin Elmer machine types 480, 2400, and 9600 is provided below:

Temperature	Time	Cycles
96°C 58-60°C*	1 min 4 min	2X
94°C 58-60°C*	1 min 2 min	28-35X
70°C	10 min	1X
25°C	soak	



*The performance of MPCR kit against annealing temperatures. The above gel picture is an illustration of different annealing temperatures on MPCR kit MP-70104.

Note: A 2-step PCR thermocycle profile was found to be more effective than a 3-step PCR thermocycle profile for MPCR amplification. For 2-step PCR, use 94-95°C for denaturation and 58-60°C for annealing and extension. The 72°C step is omitted.

4. Agarose Gel Electrophoresis:

To fractionate the MPCR DNA product electrophoretically, mix 10µl of the MPCR product with 2µl 6X loading buffer. Run the total 12µl alongside 10 µl of DNA marker* from the MPCR kit on a 2 % agarose gel containing 0.5 mg/ml ethidium bromide. Electrophorese and photograph. (Hint: Best results are obtained when the gels are run slowly at less than 100 volts).

* DAN Marker contains linear double stranded DNA bands of 1,000; 900, 800, 700; 600; 500; 400; 300; 200; and 100 base pairs (bp).

TROUBLESHOOTING

1. MPCR AMPLIFICATION

Observation	Possible Cause	Recommended Action
1.1. No signal or missing some bands during amplification even using positive control provided in kit.	1.1a. The annealing temperature in the thermocycler is too high. 1.1b. Dominant primer dimers.	1.1a. Decrease PCR annealing temperature 3-5°C gradually. 1.1b. Use any one of "Hot Start" PCR procedures.
1.2. Too many nonspecific bands.	1.2a. The annealing temperature in the thermocycler is too low. 1.2b. Pre-PCR mispriming. 1.2c. cDNA is interfering with MPCR	1.2a. Increase PCR annealing temperature 3-5°C gradually. 1.2b. Use any one of "Hot Start" PCR procedures. 1.2c. Clean cDNA with Phenol/ Chloroform. 1.2d. Use Maxim's 3M™-MPCR Kit.
1.3. No difference in gene expression among treatments	1.3a. PCR amplification of this specific gene has passed the exponential phase. 1.3b. Variation in sample preparation, RT reaction and amounts of input cDNA.	1.3a. Decrease PCR cycle number or decrease the input cDNA. 1.3b. Run a parallel PCR with a house-keeping gene to eliminate variables.

PRECAUTIONS AND STORAGE

Storage

1. Store all MPCR Kit components at -20°C. Under these conditions components of the kit are stable for 1 year.
2. Isolate the kits from any sources of contaminating DNA, especially amplified PCR product.
3. Do not mix MPCR kit components that are from different lots. Each lot is optimized individually.

REFERENCES

1. Beutler, B. and Cerami, A. (1989) *Annu. Rev. Immunol.*, 7, 625.
2. Van Snick, J. (1990) *Annu. Rev. Immunol.*, 8, 253.
3. Schrader, J.W. (1986) *Annu. Rev. Immunol.*, 4, 205.
4. Demetri, G.D. (1991) *Blood*, 78, 2791.
5. Oppenheim, J.J. et al., (1991) *Annu. Rev. Immunol.*, 9, 617.
6. Gagnon, L.L.M. (1997) *Cell Mol Biol.* 43 (3), 313-318.
7. Parra B. et. al., (1997) *Virology* 233 (2), 260-270.
8. Chamberlain, J.S. et al., In: *The polymerase chain reaction*. Mullis K, Ferre F and Gibbs R, eds. Birkhauser Boston Press, 38-46, 1994.
9. Chumakov, K.M. 1994, RT can inhibit PCR and stimulate primer-dimer formation. *PCR Methods and Applications*. 4: 62-64.
10. Hayashi, K., Orita, M., Suzuki, Y. & Sekiya, T. (1989) *Nucleic Acids Res.* 17:3605.
11. Landgraf, A., Reckmann, B., & Pingoud, A. (1991) *Analytical Biochemistry* 193:231.
12. Bloch, W. (1991) *Biochemistry* 30:2735.